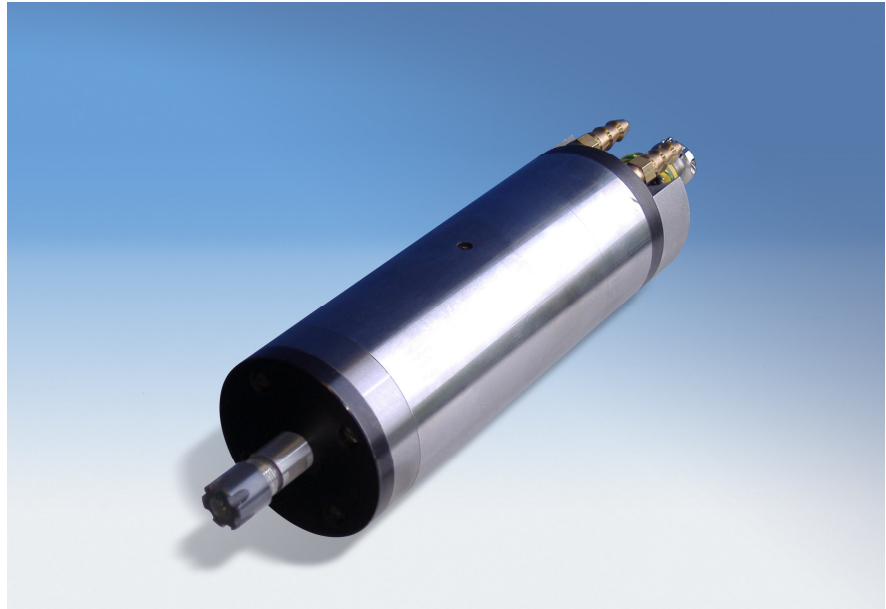


HFES Series Engraving Spindles

Jena Tec is pleased to announce the introduction of the HFES high speed engraving series to complement its existing range of motorised and belt driven spindles.

Water cooled for efficiency and with manual collet tool change for economy and simplicity, the HFES range provides a modular range of high performance units for engraving, drilling and routing.

Constructed from high quality materials and bearing specifications, the units are extremely accurate and rugged for demanding applications.



Spindle Reference	Spindle Diameter	Spindle Length	Maximum Speed	Power Output	Torque	Voltage	Amperage	Hertz	Collet Type
	D mm	L mm	RPM	Kw	Nm	V	A	Hz	
HFES.D48-24/005X	48	155	24000	0.05	0.05	80	0.9	400	3.175
HFES.D48-24/012X	48	155	24000	0.12	0.05	120	1.4	400	3.175
HFES.D48-60/030X	48	155	60000	0.3	0.05	120	2.5	1000	3.175
HFES.D58-24/025X	58	170	24000	0.25	0.1	142	2.1	400	ER11
HFES.D58-60/055X	58	170	60000	0.55	0.1	142	4.2	1000	ER11
HFES.D62-24/012X	62	185	24000	0.12	0.1	120	1.4	400	ER11
HFES.D62-24/330X	62	185	24000	0.3	0.1	142	1.85	400	ER11
HFES.D80-24/1.1X	80	220	24000	1.1	0.4	350	2.6	400	ER11

For more information on the Jena Tec range of ballscrews, spindles and linear motion products and services, contact our sales team on +44 (0)1623 726010 or sales@jena-tec.co.uk