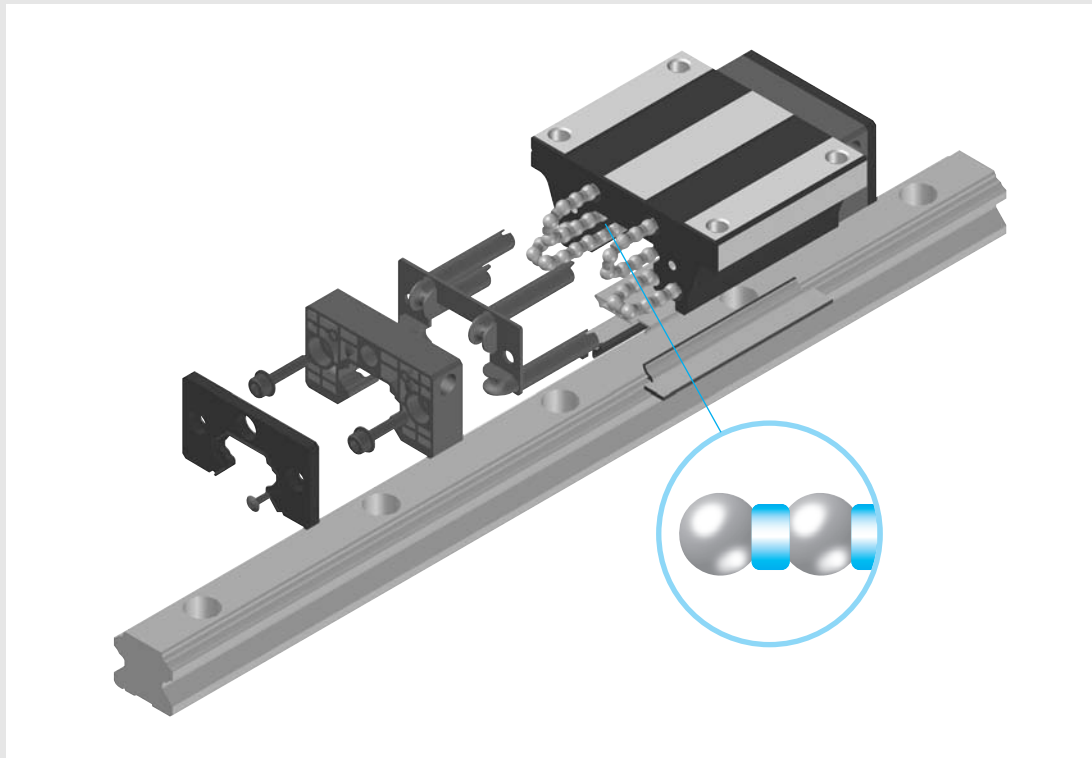


**SPG / SPS Spacer Linear Rail System**

**SPG / SPS Spacer Linear Rail System**



**[Design feature]**

SPG, SPS type is ball spacer inserted type between balls. This spacer minimizes the noise level by eliminating metal to metal contact and storing grease which provides long term, maintenance free operation.

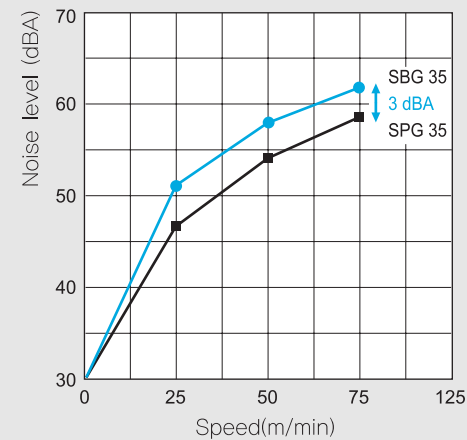
**[Using SBG standard rail]**

SPG, SPS type are using SBG standard rail.

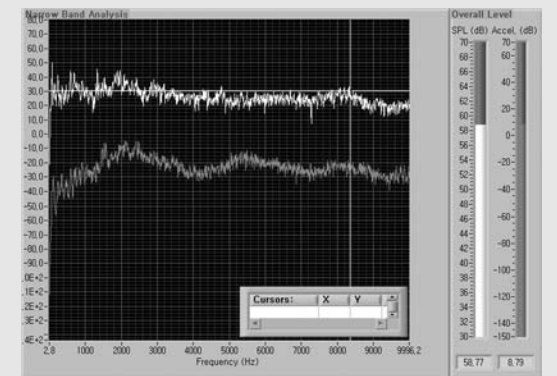
**[Dimensionally interchangeable with SBG type]**

SPG/SPS spacer series blocks are dimensionally interchangeable with SBG/SBS blocks.

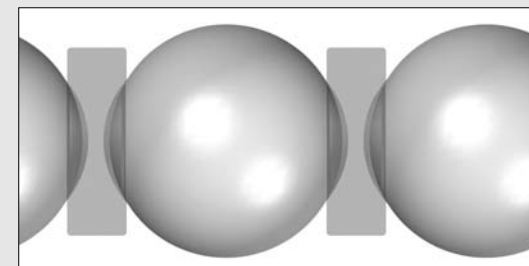
**[Noise level test for SBG35 and SPG35]**



(Comparison of noise level)



(SPG35 1.3m/sec)



**[Grease retention]**

The spacers provide grease storage areas providing long term, maintenance free operation.

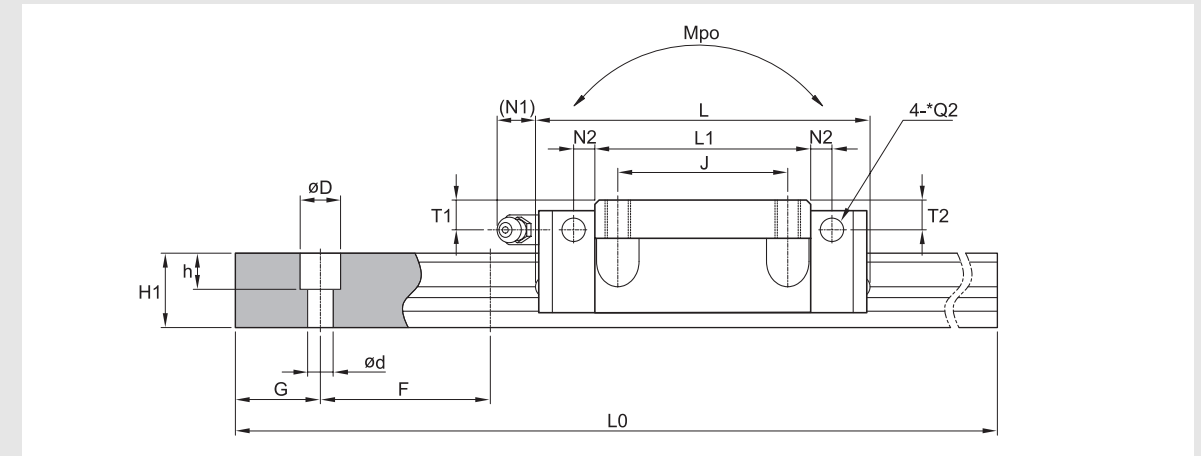
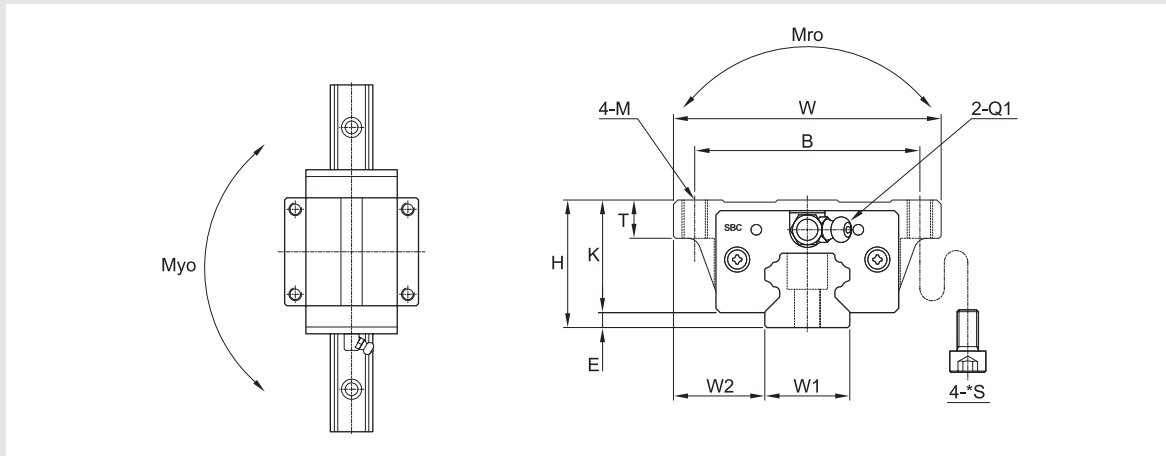
**[Ordering example]**

Ordering example for SPG/SPS type are identical with SBG type ordering. Therefore, please see the ordering example for SBG type.

SPG / SPS Spacer Linear Rail System

SPG / SPS Spacer Linear Rail System

SPG-FL/FLL



(Unit : mm)

Model	Mounting dimension				Block dimensions												
	H	W	L	E	Mounting tap hole				L1	T	K	Grease fitting					
					B	J	M	*S				T1	N1	T2	N2	Q1	*Q2
SPG20 FL	30	63	77.2	3.5	53	40	M6	M5	50.8	9	26.5	7	11.7	7	5	M6x0.75	Ø6
SPG20 FLL	30	63	93.2	3.5	53	40	M6	M5	66.8	9	26.5	7	11.7	7	5	M6x0.75	Ø6
SPG25 FL	36	70	86.9	6.5	57	45	M8	M6	59.5	10	29.5	8.2	11.7	8.1	5.5	M6x0.75	Ø6
SPG25 FLL	36	70	106.4	6.5	57	45	M8	M6	79	10	29.5	8.2	11.7	8.1	5.5	M6x0.75	Ø6
SPG30 FL	42	90	100	7	72	52	M10	M8	70.4	12	35	8.5	11.7	8.5	5.5	M6x0.75	Ø6
SPG30 FLL	42	90	122.5	7	72	52	M10	M8	92.9	12	35	8.5	11.7	8.5	5.5	M6x0.75	Ø6
SPG35 FL	48	100	112.6	7.5	82	62	M10	M8	80.4	13	40.5	8	11.7	8	6	M6x0.75	Ø6
SPG35 FLL	48	100	138.1	7.5	82	62	M10	M8	105.9	13	40.5	8	11.7	8	6	M6x0.75	Ø6

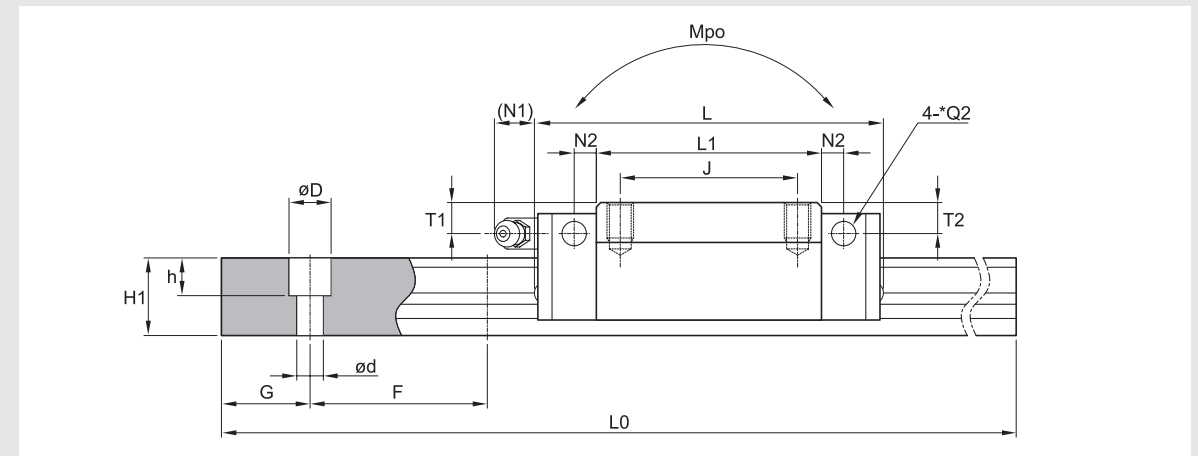
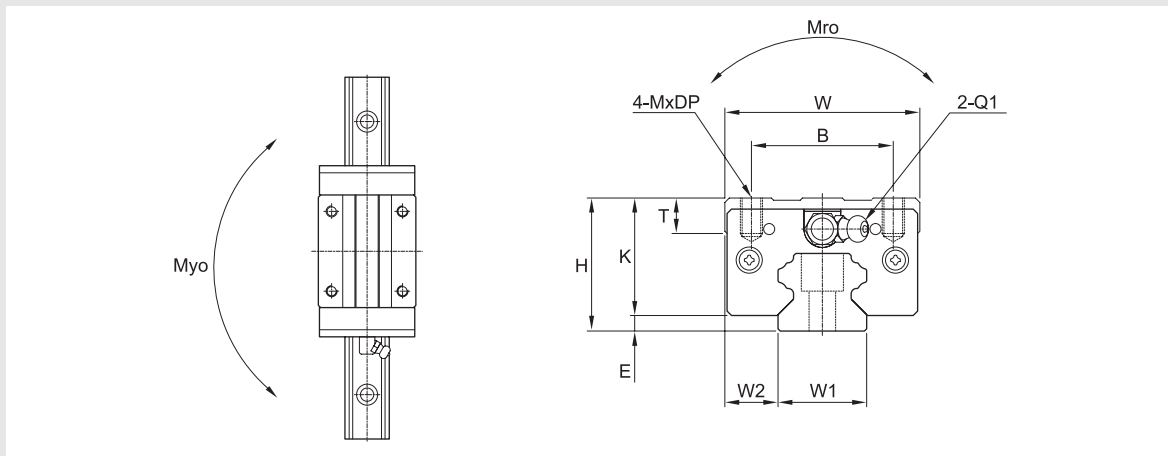
Rail dimension									Basic load rating		Permissible static moment			Mass	
W1	W2	H1	F	Bolt hole			G	Max length of rail L0	C	Co	Mro	Mpo	Myo	Block [kg]	Rail [kg/m]
				d	D	h									
20	21.5	17.5	60	6	9.5	8.5	20	4000	14.2	25	0.22	0.18	0.18	0.42	2.2
20	21.5	17.5	60	6	9.5	8.5	20	4000	16.9	36.5	0.28	0.31	0.31	0.54	2.2
23	23.5	21.8	60	7	11	9	20	4000	20.9	39.2	0.35	0.31	0.3	0.62	3.1
23	23.5	21.8	60	7	11	9	20	4000	24.6	48	0.43	0.49	0.48	0.78	3.1
28	31	25	80	9	14	12	20	4000	29.2	53.8	0.59	0.49	0.48	1.1	4.45
28	31	25	80	9	14	12	20	4000	35.3	67.9	0.74	0.79	0.78	1.44	4.45
34	33	29	80	9	14	12	20	4000	38.8	68.6	0.94	0.74	0.72	1.57	6.4
34	33	29	80	9	14	12	20	4000	46	90.4	1.24	1.3	1.28	2.14	6.4

- ① C (Basic dynamic load rating), Co (Basic static load rating)
- ② \*S: Bolt size for bottom mounting type of block.
- ③ \*Q2: The hole of side grease nipple is not made to prevent a foreign substance from going into inside.  
When you order the side grease nipple, we build it by ourselves.

SPG / SPS Spacer Linear Rail System

SPG / SPS Spacer Linear Rail System

SPG-SL/SL



(Unit : mm)

Model	Mounting dimension				Block dimensions												
	H	W	L	E	Mounting tap hole				L1	T	K	Grease fitting					
					B	J	M	DP				T1	N1	T2	N2	Q1	*Q2
SPG20 SL	30	44	77.2	3.5	32	36	M5	8	50.8	8	26.5	8	11.7	7	5	M6x0.75	Ø6
SPG20 SLL	30	44	93.2	3.5	32	50	M5	8	66.8	8	26.5	8	11.7	7	5	M6x0.75	Ø6
SPG25 SL	40	48	86.9	6.5	35	35	M6	8	59.5	12	33.5	12	11.7	12.2	5.5	M6x0.75	Ø6
SPG25 SLL	40	48	106.4	6.5	35	50	M6	8	79	12	33.5	12	11.7	12.2	5.5	M6x0.75	Ø6
SPG30 SL	45	60	100	7	40	40	M8	10	70.4	12	38	12	11.7	11.5	5.5	M6x0.75	Ø6
SPG30 SLL	45	60	122.5	7	40	60	M8	10	92.9	12	38	12	11.7	11.5	5.5	M6x0.75	Ø6
SPG35 SL	55	70	112.6	7.5	50	50	M8	12	80.4	15	47.5	15	11.7	15	6	M6x0.75	Ø6
SPG35 SLL	55	70	138.1	7.5	50	72	M8	12	105.9	15	47.5	15	11.7	15	6	M6x0.75	Ø6

Rail dimension									Basic load rating		Permissible static moment			Mass	
W1	W2	H1	F	Bolt hole			G	Max length of rail L0	C	Co	Mro	Mpo	Myo	Block [kg]	Rail [kg/m]
				d	D	h									
20	12	17.5	60	6	9.5	8.5	20	4000	14.2	25	0.22	0.18	0.18	0.33	2.2
20	12	17.5	60	6	9.5	8.5	20	4000	16.9	36.5	0.28	0.31	0.31	0.45	2.2
23	12.5	21.8	60	7	11	9	20	4000	20.9	39.2	0.35	0.31	0.3	0.56	3.1
23	12.5	21.8	60	7	11	9	20	4000	24.6	48	0.43	0.49	0.48	0.73	3.1
28	16	25	80	9	14	12	20	4000	29.2	53.8	0.59	0.49	0.48	0.98	4.45
28	16	25	80	9	14	12	20	4000	35.3	67.9	0.74	0.79	0.78	1.28	4.45
34	18	29	80	9	14	12	20	4000	38.8	68.6	0.94	0.74	0.72	1.63	6.4
34	18	29	80	9	14	12	20	4000	46	90.4	1.24	1.3	1.28	2.12	6.4

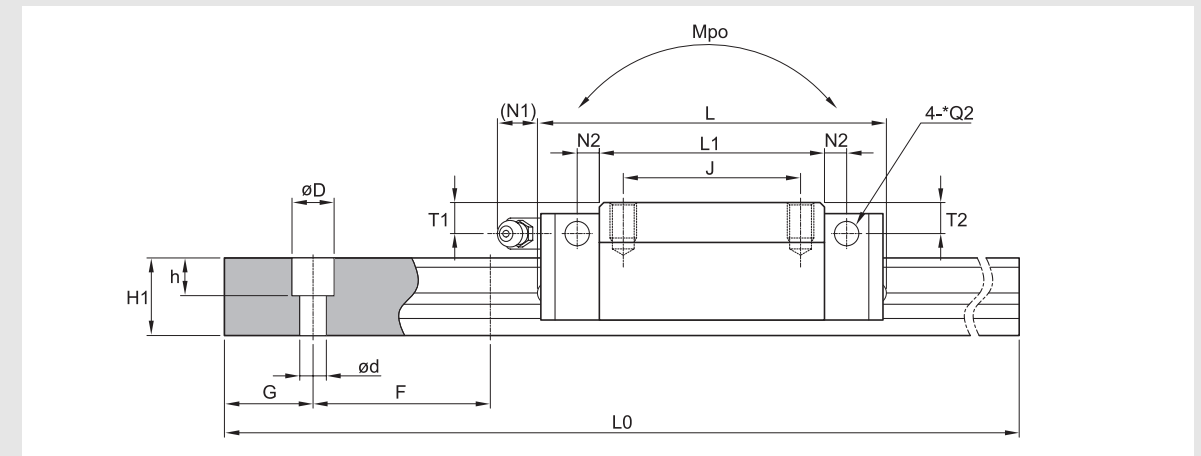
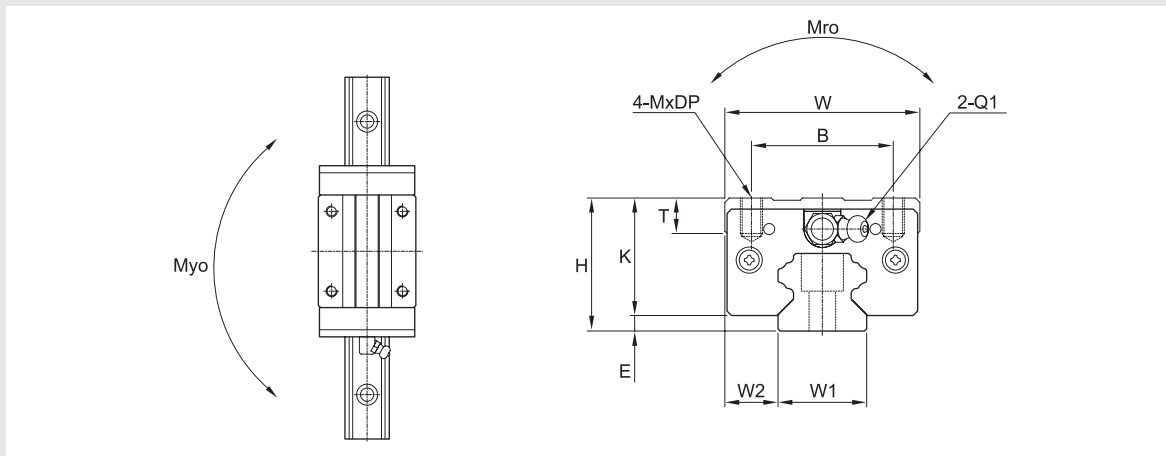
① C (Basic dynamic load rating), Co (Basic static load rating)

② \*Q2: The hole of side grease nipple is not made to prevent a foreign substance from going into inside.  
When you order the side grease nipple, we build it by ourselves.

**SPG / SPS Spacer Linear Rail System**

**SPG / SPS Spacer Linear Rail System**

**SPS-SL, HL/SLL, HL**



(Unit : mm)

Model	Mounting dimension				Block dimensions												
	H	W	L	E	Mounting tap hole				L1	T	K	Grease fitting					
					B	J	M	DP				T1	N1	T2	N2	Q1	*Q2
SPS20 SL	28	44	77.2	3.5	32	32	M5	7	50.8	7.5	24.5	5	11.7	5	5	M6x0.75	Ø6
SPS20 SLL	28	44	93.2	3.5	32	50	M5	7	66.8	7.5	24.5	5	11.7	5	5	M6x0.75	Ø6
SPS25 SL	33	48	86.9	6.5	35	35	M6	6	59.5	8	26.5	5.2	11.7	5.1	5.5	M6x0.75	Ø6
SPS25 SLL	33	48	106.4	6.5	35	50	M6	6	79	8	26.5	5.2	11.7	5.1	5.5	M6x0.75	Ø6
SPS25 HL	36	48	86.9	6.5	35	35	M6	8	59.5	11	29.5	8.2	11.7	8.1	5.5	M6x0.75	Ø6
SPS25 HLL	36	48	106.4	6.5	35	50	M6	8	79	11	29.5	8.2	11.7	8.1	5.5	M6x0.75	Ø6
SPS30 SL	42	60	100	7	40	40	M8	10	70.4	12	35	8.5	11.7	8.5	5.5	M6x0.75	Ø6
SPS30 SLL	42	60	122.5	7	40	60	M8	10	92.9	12	35	8.5	11.7	8.5	5.5	M6x0.75	Ø6
SPS35 SL	48	70	112.6	7.5	50	50	M8	12	80.4	15	40.5	8	11.7	8	6	M6x0.75	Ø6
SPS35 SLL	48	70	138.1	7.5	50	72	M8	12	105.9	15	40.5	8	11.7	8	6	M6x0.75	Ø6

Rail dimension									Basic load rating		Permissible static moment			Mass	
W1	W2	H1	F	Bolt hole			G	Max length of rail L0	C	Co	Mro	Mpo	Myo	Block [kg]	Rail [kg/m]
				d	D	h									
20	12	17.5	60	6	9.5	8.5	20	4000	14.2	25	0.22	0.18	0.18	0.33	2.2
20	12	17.5	60	6	9.5	8.5	20	4000	16.9	36.5	0.28	0.31	0.31	0.45	2.2
23	12.5	21.8	60	7	11	9	20	4000	20.9	39.2	0.35	0.31	0.3	0.56	3.1
23	12.5	21.8	60	7	11	9	20	4000	24.6	48	0.43	0.49	0.48	0.73	3.1
23	12.5	21.8	60	7	11	9	20	4000	20.9	39.2	0.35	0.31	0.3	0.98	3.1
23	12.5	21.8	60	7	11	9	20	4000	24.6	48	0.43	0.49	0.48	1.28	3.1
28	16	25	80	9	14	12	20	4000	29.2	53.8	0.59	0.49	0.48	0.98	4.45
28	16	25	80	9	14	12	20	4000	35.3	67.9	0.74	0.79	0.78	1.28	4.45
34	18	29	80	9	14	12	20	4000	38.8	68.6	0.94	0.74	0.72	1.63	6.4
34	18	29	80	9	14	12	20	4000	46	90.4	1.24	1.3	1.28	2.12	6.4

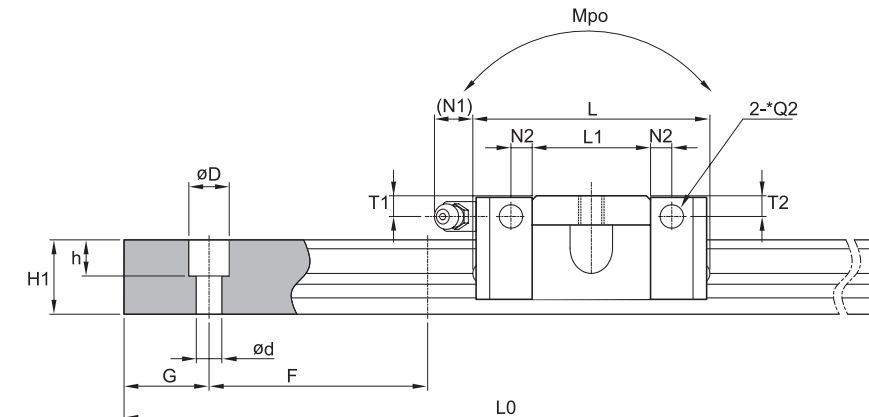
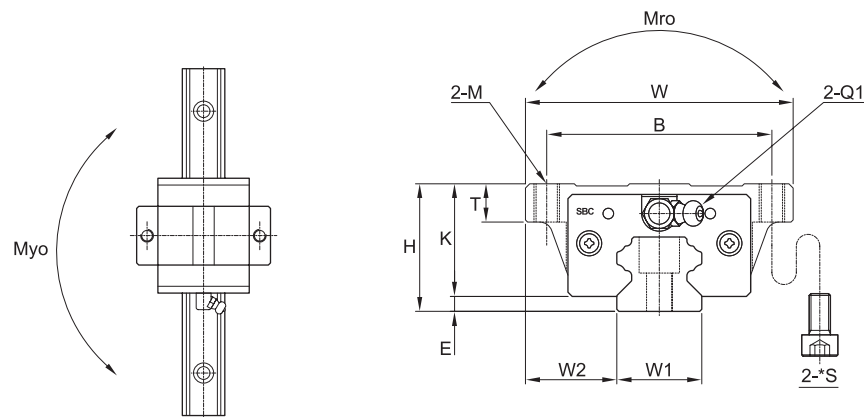
① C (Basic dynamic load rating), Co (Basic static load rating)

② \*Q2: The hole of side grease nipple is not made to prevent a foreign substance from going into inside.  
When you order the side grease nipple, we build it by ourselves.

SPG / SPS Spacer Linear Rail System

SPG / SPS Spacer Linear Rail System

SPS-FV



Model	Mounting dimension				Block dimensions											
	H	W	L	E	Mounting tap hole			L1	T	K	Grease fitting					
					B	M	*S				T1	N1	T2	N2	Q1	*Q2
SPS20 FV	28	63	54.2	3.5	53	M6	M5	27.8	7	24.5	5	11.7	5	5	M6x0.75	Ø6
SPS25 FV	33	70	62.6	6.5	57	M8	M6	35.2	7	26.5	5.2	11.7	5.1	5.5	M6x0.75	Ø6

(Unit : mm)

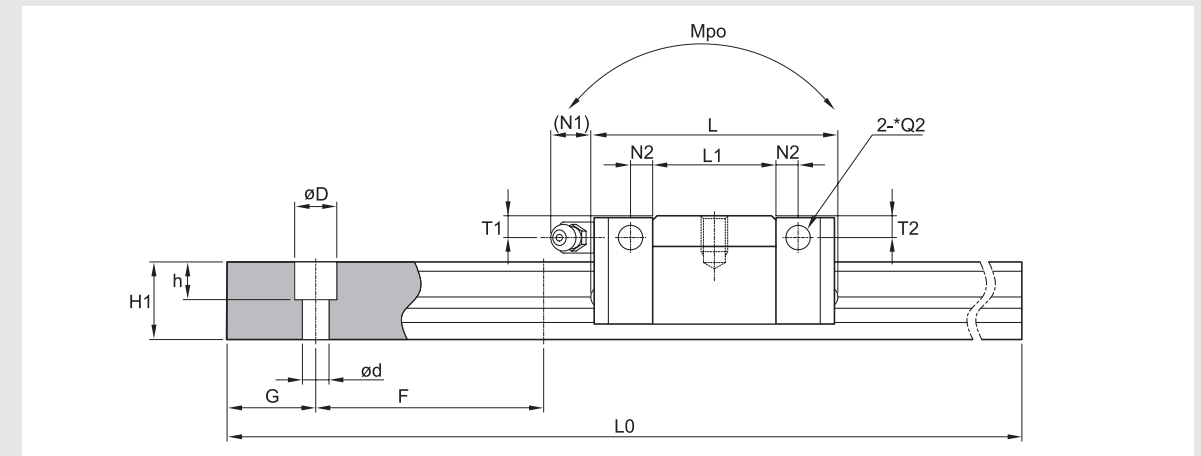
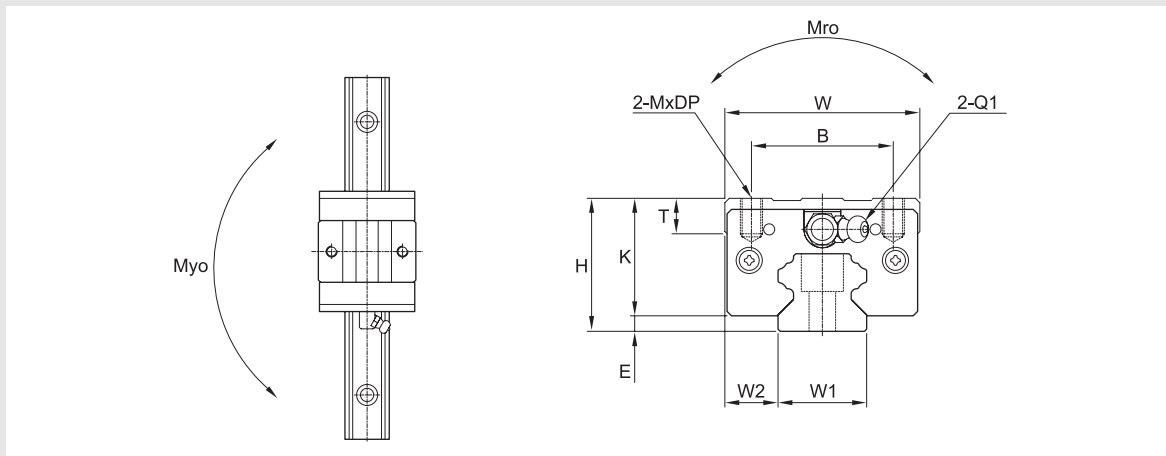
Rail dimension									Basic load rating		Permissible static moment			Mass	
W1	W2	H1	F	Bolt hole			G	Max length of rail L0	C	Co	Mro	Mpo	Myo	Block [kg]	Rail [kg/m]
				d	D	h									
20	21.5	17.5	60	6	9.5	8.5	20	4000	7.65	13.5	0.12	0.1	0.1	0.24	2.2
23	23.5	21.8	60	7	11	9	20	4000	11.29	21.1	0.19	0.17	0.17	0.37	3.1

- ① C (Basic dynamic load rating), Co (Basic static load rating)
- ② \*S: Bolt size for bottom mounting type of block.
- ③ \*Q2: The hole of side grease nipple is not made to prevent a foreign substance from going into inside. When you order the side grease nipple, we build it by ourselves.

SPG / SPS Spacer Linear Rail System

SPG / SPS Spacer Linear Rail System

SPS-SV



(Unit : mm)

Model	Mounting dimension				Block dimensions											
	H	W	L	E	Mounting tap hole			L1	T	K	Grease fitting					
					B	M	DP				T1	N1	T2	N2	Q1	*Q2
SPS20 SV	28	44	54.2	3.5	32	M5	7	27.8	7.5	24.5	5	11.7	5	5	M6x0.75	Ø6
SPS25 SV	33	48	62.6	6.5	35	M6	6	35.2	8	26.5	5.2	11.7	5.1	5.5	M6x0.75	Ø6

Rail dimension									Basic load rating		Permissible static moment			Mass	
W1	W2	H1	F	Bolt hole			G	Max length of rail L0	C	Co	Mro	Mpo	Myo	Block [kg]	Rail [kg/m]
				d	D	h									
20	12	17.5	60	6	9.5	8.5	20	4000	7.65	13.5	0.12	0.1	0.1	0.19	2.2
23	12.5	21.8	60	7	11	9	20	4000	11.29	21.1	0.19	0.17	0.17	0.32	3.1

① C (Basic dynamic load rating), Co (Basic static load rating)

② \*Q2: The hole of side grease nipple is not made to prevent a foreign substance from going into inside.  
When you order the side grease nipple, we build it by ourselves.